



SEPTEMBER 12, 2024

Gynecologic Cancers Basics

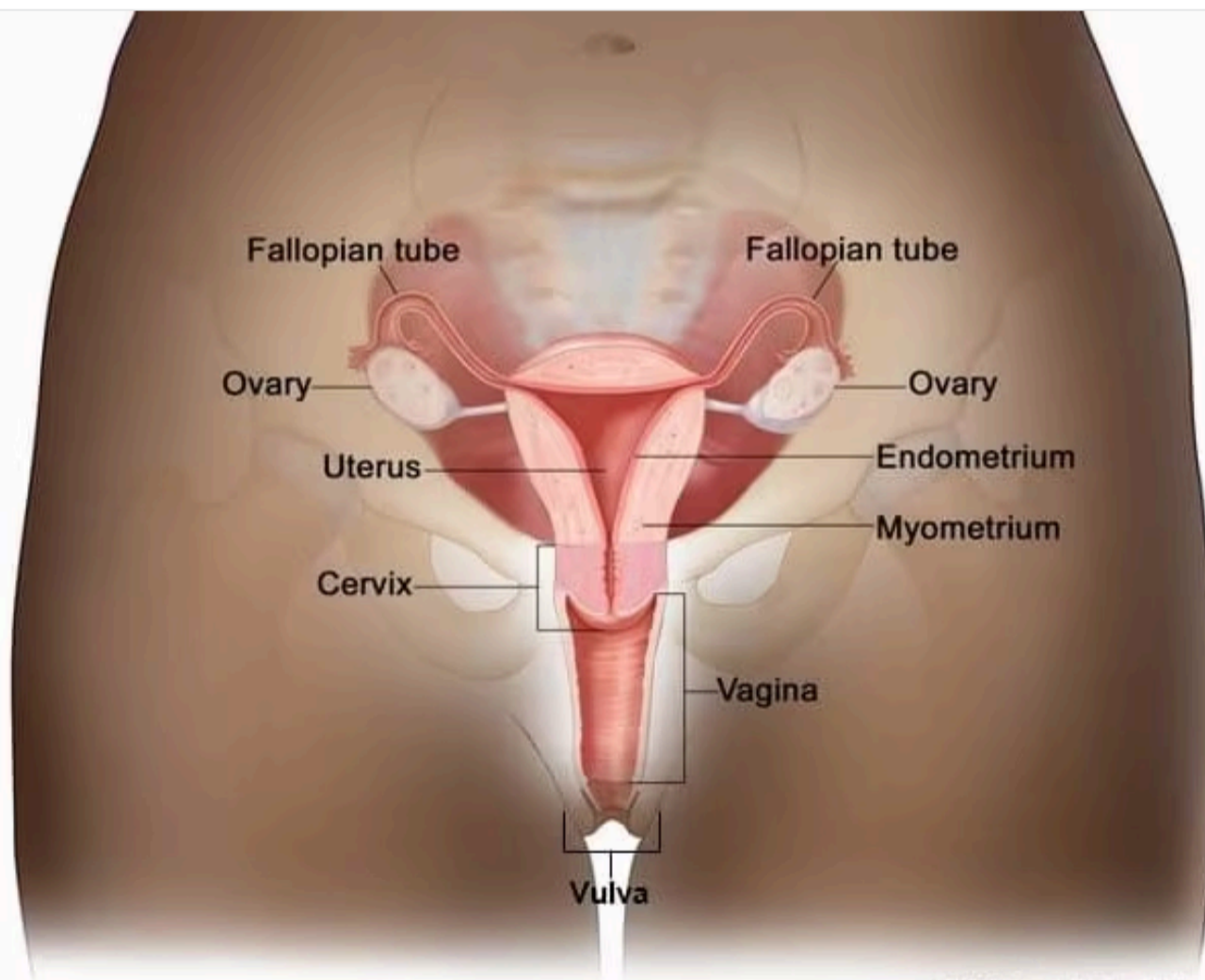
KEY POINTS

- The five main types of gynecologic cancer are: cervical, ovarian, uterine, vaginal, and vulvar.
- There are several ways to treat gynecologic cancer. The treatment depends on the type of cancer and how far it has spread.



What it is

Gynecologic cancer is a disease in which cells in a woman's reproductive organs grow out of control. The five main types of gynecologic cancer are: [cervical](#), [ovarian](#), [uterine](#), [vaginal](#), and [vulvar](#). (A sixth type of gynecologic cancer is the very rare fallopian tube cancer.)



© 2021 Terese Winslow LLC
U.S. Govt. has certain rights

This diagram shows different parts of a woman's reproductive system.

SOURCE: © 2021 Terese Winslow LLC. US government has certain rights. Used with permission. Contact artist at www.teresewinslow.com for licensing.

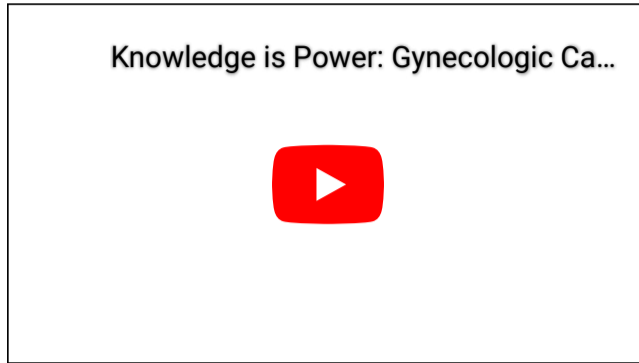
Types

- [Cervical cancer](#) begins in the *cervix*, which is the lower, narrow end of the uterus. (The uterus is also called the womb.)
- [Ovarian cancer](#) begins in the *ovaries*, which are located on each side of the uterus. Some ovarian cancers can also begin in the fallopian tubes or peritoneum.
- [Uterine cancer](#) begins in the *uterus*, the pear-shaped organ in a woman's pelvis where the baby grows when she is pregnant.

- [Vaginal cancer](#) begins in the *vagina*, which is the hollow, tube-like channel between the bottom of the uterus and the outside of the body.
- [Vulvar cancer](#) begins in the *vulva*, the outer part of the female genital organs.

Each gynecologic cancer is unique, with different [signs and symptoms](#), different risk factors (things that may increase your chance of getting a disease), and different [prevention strategies](#).

Knowledge Is Power: Gynecologic Cancer Symptoms



[Knowledge is Power: Gynecologic Cancer Symptoms](#)

[This short animated video](#) encourages women to learn the symptoms of gynecologic cancers.

SOURCES

CONTENT SOURCE:

[National Center for Chronic Disease Prevention and Health Promotion; Division of Cancer Prevention and Control](#)